

wattwatchers

DIGITAL ENERGY

Engaging Consumers

Take Charge Foresighting Forum 2018





THE WATTWATCHERS **HARDWARE** UNIVERSE

MODELS

- **3M**
» 3G, 3 CHANNELS
- **6M**
» 3G, 6 CHANNELS
- **6W**
» WIFI, 3/6 CHANNELS
- **6M + 3SW**
» 3G, 6 CHANNELS +
3 SWITCHES



ANTENNAS

- **STANDARD**
» 35MM
- **BLADE**
» 70mm
- **LONG RANGE**



WIRING TAILS

- **SINGLE PHASE**
» RED + BLACK
- **3 - PHASE**
» RED, WHITE & BLUE

CTs - AMPS

- 60
 - 120
 - 200
 - 400
 - 600
 - Rogowski Coils
- 3000 amps



CONTACTORS

- **SINGLE PHASE**
» 2 POLE
- **3 - PHASE**
» 4 POLE

Customer number	6997
Account number	6773
Service address	
Tax Invoice	Issue date 31 Aug 2016

Electricity account summary 10 Jun 2016 to 30 Aug 2016

Plan	Flexi Saver
Opening balance	\$0.00
Adjustments	
Reconnection Read - Business Hours (inc. GST \$1.00)	\$11.04
Rebate (inc. GST \$2.27Cr)	\$25.00Cr
Campaign Reward (inc. GST \$4.09Cr)	\$45.01Cr
Transfer Adjustment (inc. GST \$0.00)	\$36.84Cr
Balance carried forward	\$95.81Cr
Current charges (inc. GST \$37.86 - see over for details)	\$416.49
Total amount due (inc. GST \$32.50)	\$320.68
3% discount on usage if you pay this bill by the due date	\$10.53Cr
14% additional campaign discount on usage if you pay this bill by the due date	\$49.13Cr
Total amount due with discount	\$261.02

An * indicates a GST applicable supply. Please refer to all pages of this invoice.
Please note that the total Service Charges may include non-GST applicable items.

Due date
19 Sep 2016

**Total amount
if paid after due date**
\$320.68

**Total amount with
discount if paid by
due date**
\$261.02

Stockholm syndrome

Feelings of trust or affection felt in many cases of kidnapping or hostage-taking by a victim towards a captor



Data-led energy empowerment

An aerial photograph of a residential house with a grey metal roof. The roof is covered with a large array of blue solar panels. The house has a light-colored exterior and several windows. The surrounding area includes green lawns, trees, and a swimming pool in the background.

Get Data

Understand how energy is consumed and generated in a site using real-time, very granular data.

Shift & Save

Take sensible steps to configure time of use & pay attention to energy saving opportunities with zero/low cost.

Buy Better

Make sure you are buying electricity from an energy retailer best suited to your energy profile.

Solar/Battery

Invest wisely in adding solar & home storage according to your usage (the longer it takes to add the cheaper it will get).

Trade Energy

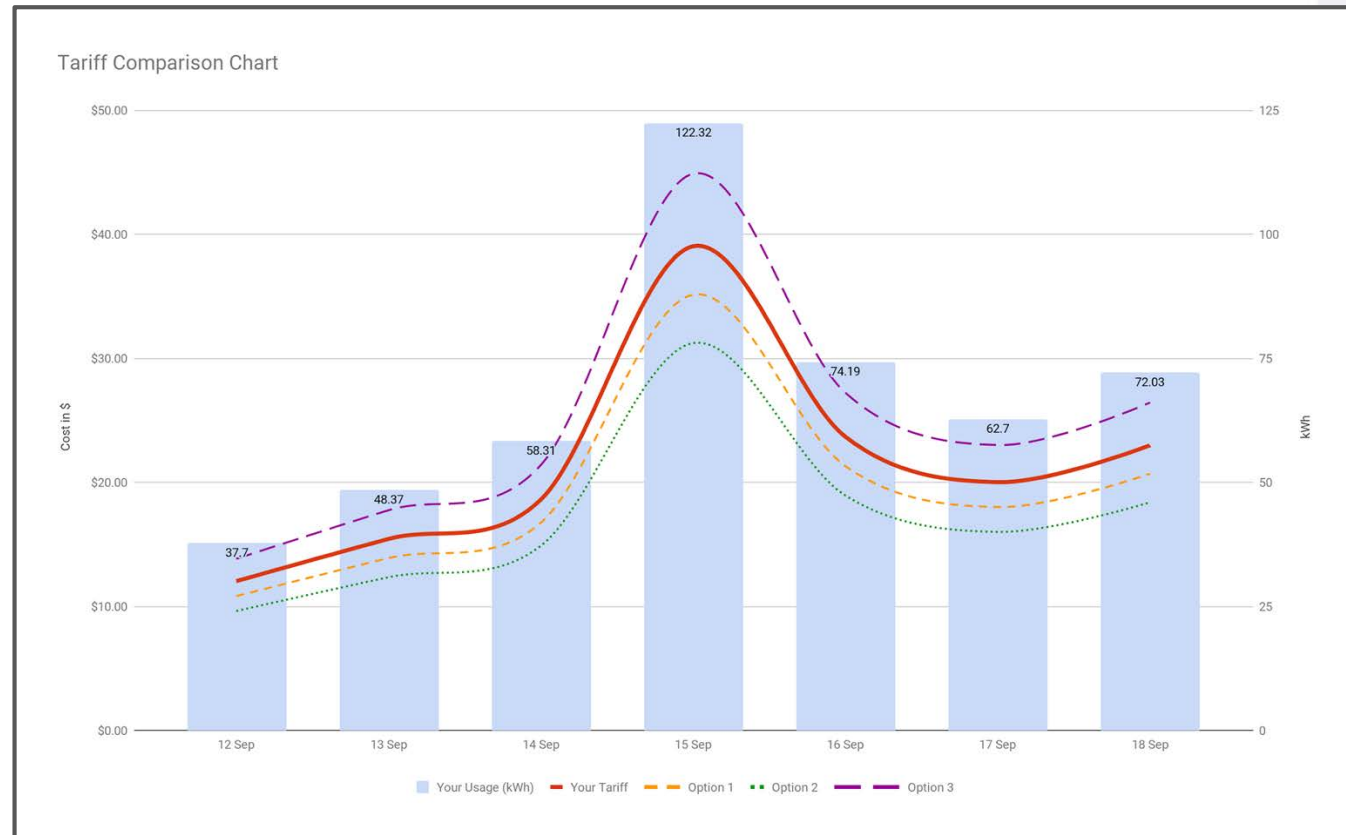
Decentralised grid here you come....
Trade locally, access DRP, shift, optimise and pay as a little as possible!

Real life examples

Tariff Switching



- Real time data
- Real time costs
- Real time tariff comparison
- Click and churn
- This could be our future

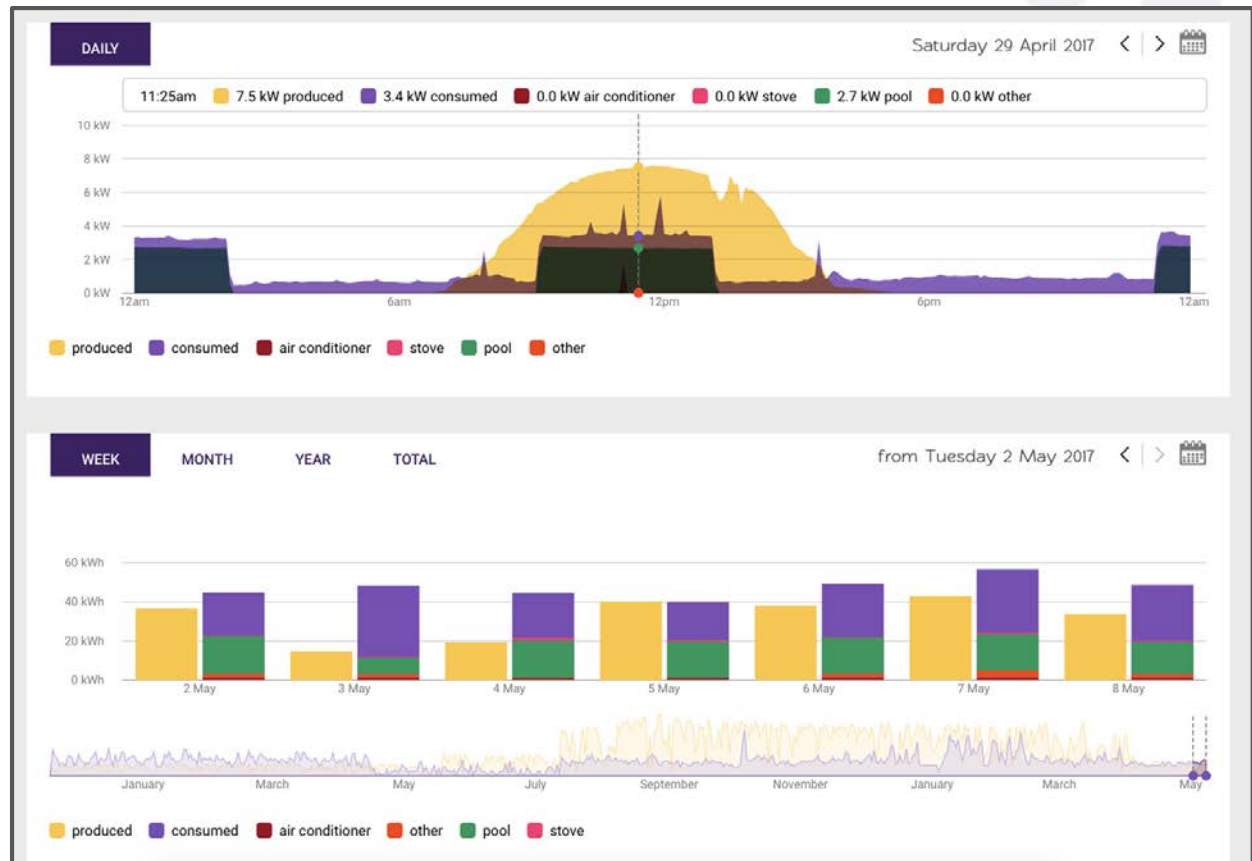


Real life examples

Software Apps

solar analytics

→ Access to a suite of independent applications that enable you to care about what is most important to you

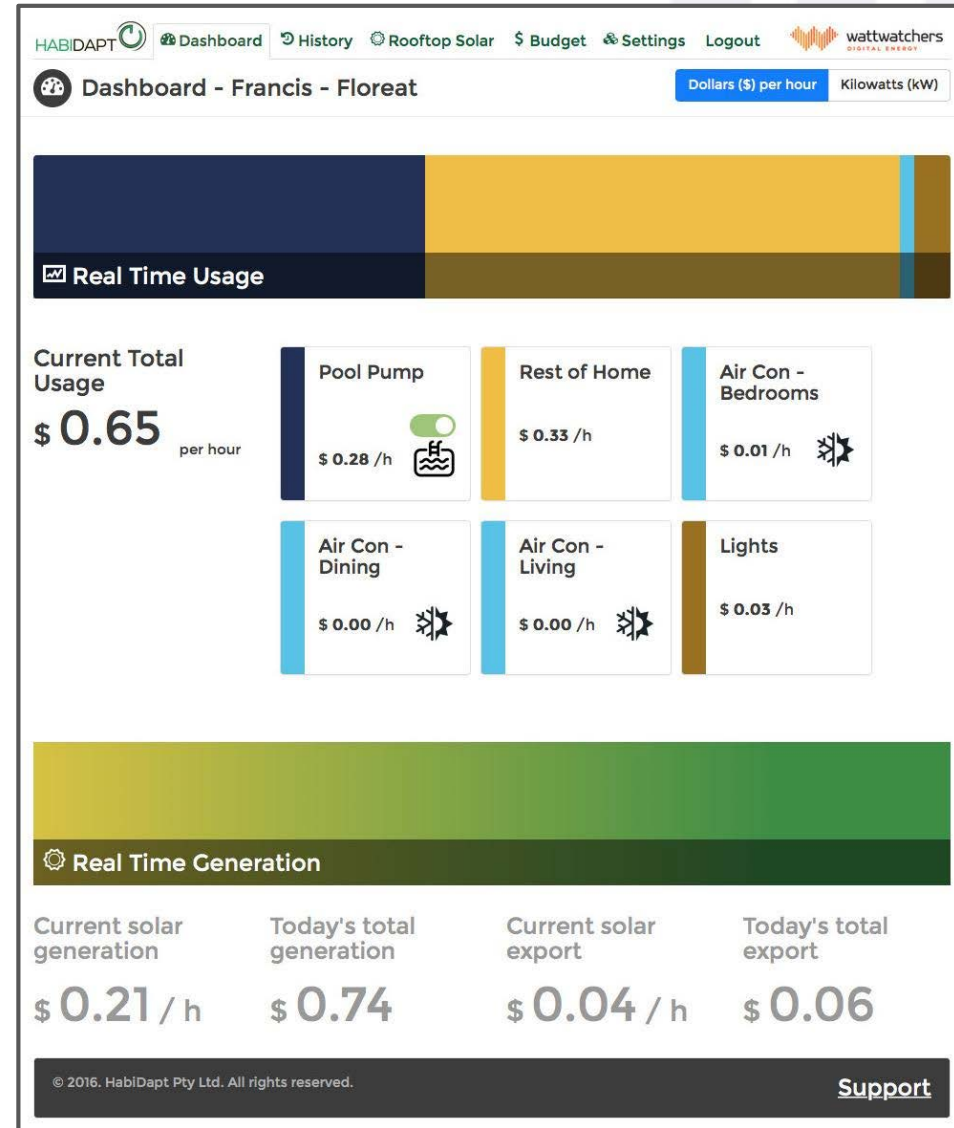


Real life examples

Understanding cost



- How did I spend that much?
- Real time data with software partners allows complete transparency across your energy consumption landscape. Providing a valuable feedback loop to allow timely changes that will result in lower bills.

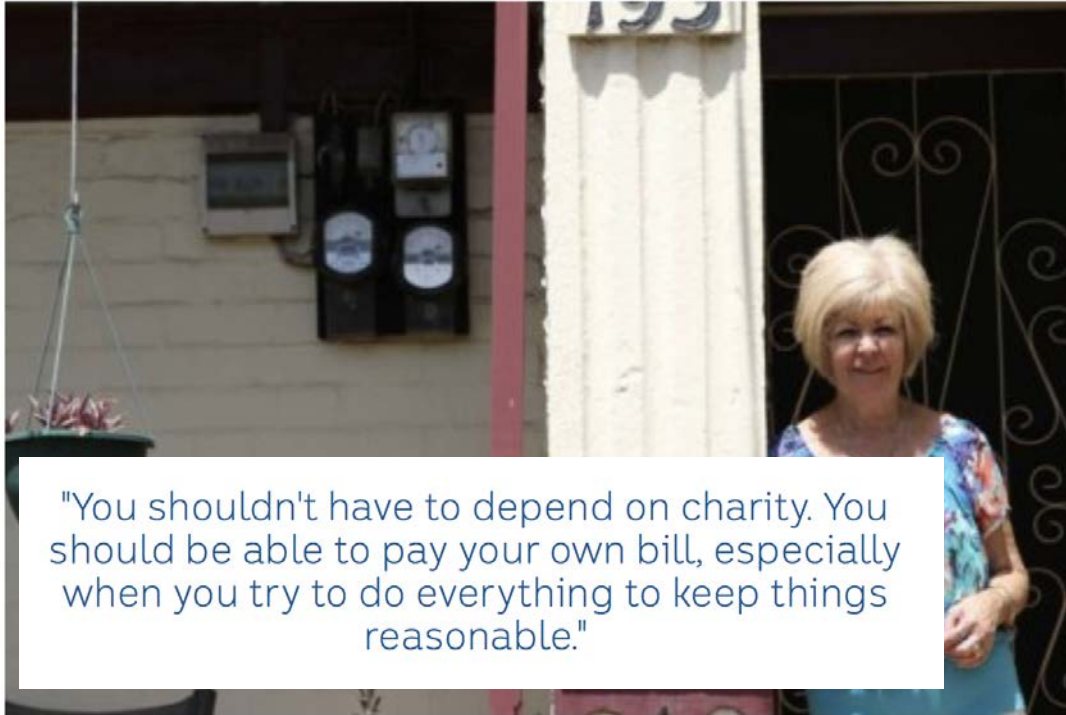


Real life examples

Electricity prices disproportionately affecting low-income households

7.30 – BY JULIA HOLMAN

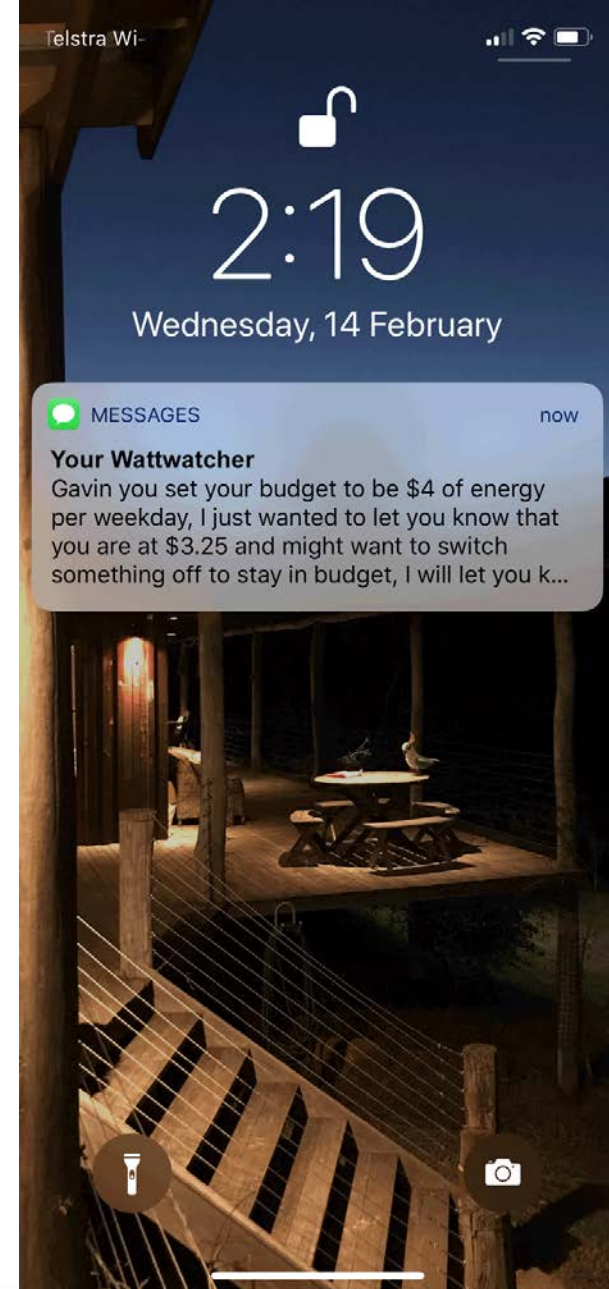
UPDATED ABOUT 3 HOURS AGO



"You shouldn't have to depend on charity. You should be able to pay your own bill, especially when you try to do everything to keep things reasonable."

PHOTO Despite reducing her usage, Rita Burrows' electricity bills are still unaffordable

ABC NEWS: JERRY RICKARD



Article courtesy ABC news, 22 Feb 2018



wattwatchers
DIGITAL ENERGY

Real life examples

Non \$ Use

- A large portion of our communities choose to live independently and have someone who is responsible for their ongoing well being and quality of life, including:
 - ◆ People with disabilities, and
 - ◆ Seniors
- Applications that allow chaperoning of their energy consumption, can alert to unexpected events, reduce unknown & uncontrolled costs, increase safety where appliances may be running at abnormally long lengths.



Real life examples

Quality of Supply

- Ever had anything funny happen with your appliances?
- I have, ovens that switch off, dryer that won't run.
- The cost of these issues was high to me as a consumer, however, turned out (and this is real data from April 2017) it wasn't me and wasn't the appliances.
- Voltage was dropping on 1 phase to 180 volts switching appliances off.

